



DETECTOR: UV/PDA

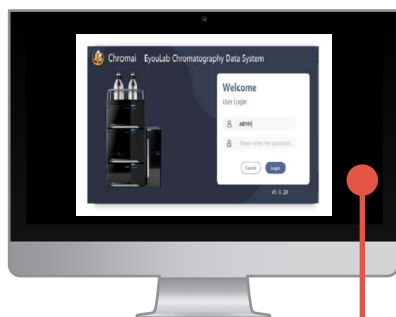
Comes with Up to 100Hz sampling rate
Improves resolution, quantization, and
signal-to-noise ratio
Extended range UV (190 nm - 900 nm),
PDA (190 nm - 800 nm)

COLUMN COMPARTMENT

- Fits four 300mm columns
- Sub-ambient temp range (-4°C to RT)
- Switching valve: 2D LC applications

AUTOSAMPLER

- Sub-ambient cooling (-4°C to RT)
- Upgradeable for SPE functionality
- Holds 108 vials or two 96 well plates

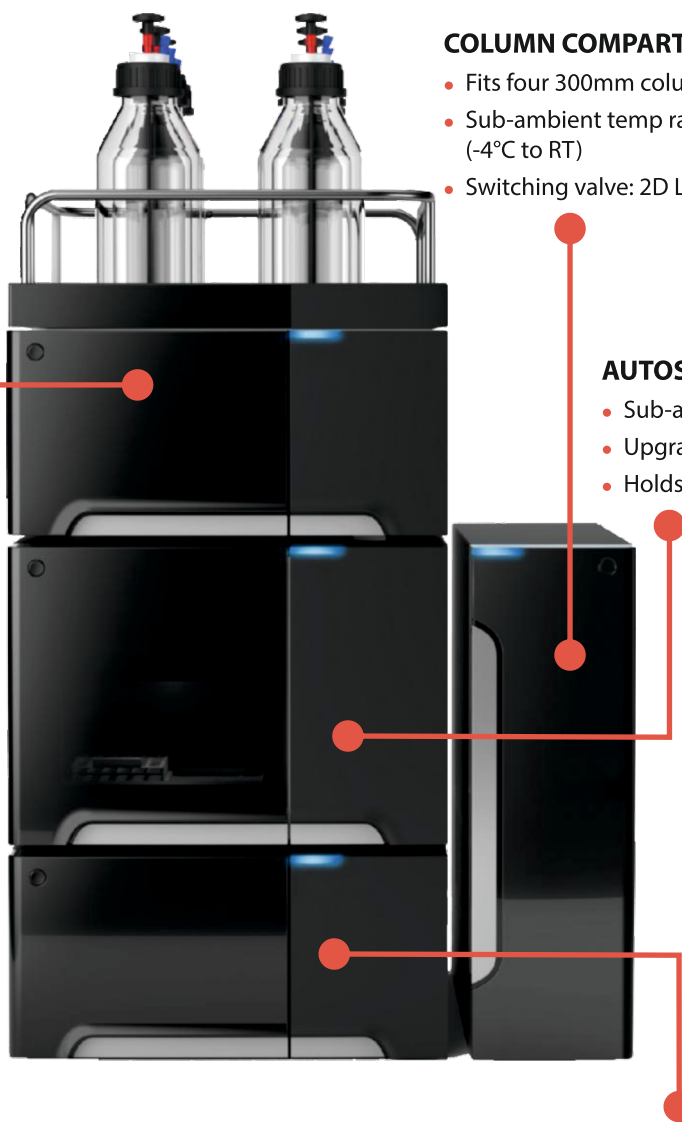


EYOULAB DATA SYSTEM

- Intelligent software with built-in database for efficient management; compliant with FDA 21CFR Part 11, GMP and GLP regulations
- Standalone, enterprise network & cloud

QUATERNARY PUMP

- Operating Pressure: 10,500 PSI (720 Bar)
- Built in compressibility compensation
- Seal wash as standard feature
- Sub2-micron particle columns



BIKAI 1511 HPLC Systems



- **Reliable performance:** Delivers precise and durable performance, ensuring high uptime and exceptional return on investment (ROI)
- **Operating pressure:** Withstands up to 10,500 PSI (720 Bar) for enhanced separation efficiency
- **Pressure pulsation suppression:** Eliminates the need for dampers, keeping pulsation below 10 PSI
- **Versatile solvent mixing:** Supports multiple solvent mixing modes for flexibility in analysis

BIKAI 1511 Bio-inert HPLC Systems



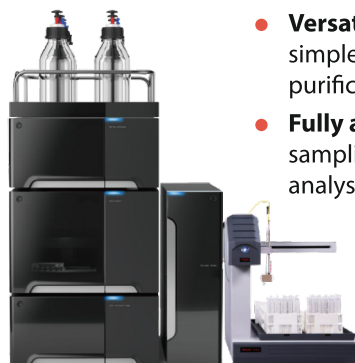
- **Bio-inert material:** Constructed with PEEK and titanium for compatibility with biological and extreme pH applications
- **Reduced sample loss:** Metal-free pathway minimizes adsorption, ensuring reliable analysis
- **Designed for biological analysis:** Optimized for accurate and efficient analysis of biological samples
- **Effective pump cleaning:** Includes a peristaltic pump for pump plunger cleaning, minimizing salt precipitation

BIKAI 1521 UHPLC Systems



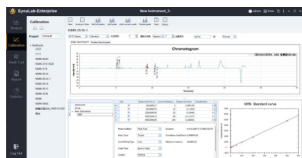
- **Ultra-high pressure resistance:** Up to 16,000 PSI (1,100 Bar) for enhanced separation efficiency
- **Improved sensitivity:** Ultra-low dispersion flow cell reduces extra-column volume
- **Cost-effective:** High performance with optimized operational costs
- **Ultra-stable performance:** Low flow rate ensures accurate results, even with small samples

BIKAI 1511 Prep HPLC Systems



- **Versatile and reliable:** Ideal for simple and flexible preparation and purification tasks
- **Fully automated:** Handles sampling, distillate collection and analysis with ease
- **Wide application support:** Suitable for semi-prep, prep and expandable to high-pressure 2D systems
- **Wide flow and pressure range:** Flow range of 0-150 mL/min; pressure range of 0-400 Bar (at 0-50 mL/min)
- **Flexible solvent support:** Up to four solvents for greater versatility

EyouLab: Chromatography Data System



- **Regulatory Compliance:** Fully compliant with FDA 21 CFR Part 11, GMP, and GLP standards
- **User-Friendly Interface:** Integrated functions in a single window with graphical monitoring for real-time equipment status
- **Advanced Data Processing:** Offers robust integration tools, automatic algorithms, and adaptive data collection for optimal results
- **System Suitability & Access Control:** Includes SST module with built-in pharmacopoeias and comprehensive user management for secure access
- **Network Support:** Enables networked operations, resource sharing, and enhanced efficiency via database version support